

Track Spacer gaTEC

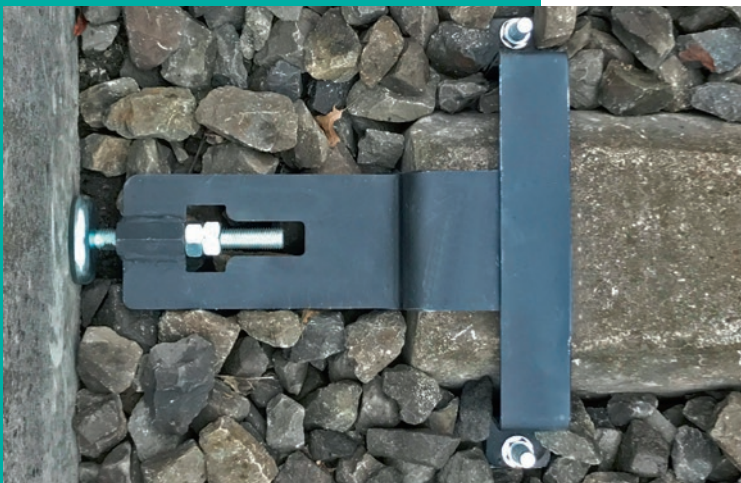


Ideas in Motion.

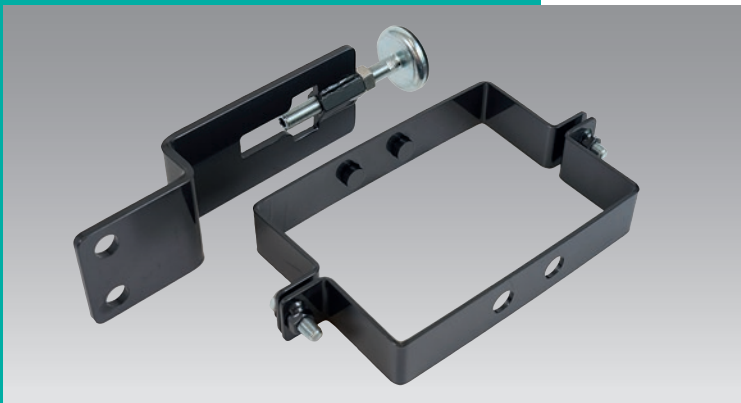
gaTEC



Assembly on wooden sleeper – with drilling



Assembly on concrete sleeper – without drilling



Keeping track distances ...

The newly developed track spacers for universal use replace the conventional wooden sleeper for securing the distance between the rail and the edge of the platform. No matter if wooden sleeper, concrete sleeper or special sleeper, they are available for all types of sleepers. The standard spacer has an extension length of 300 – 430 mm. Customer specific lengths are producible on short notice. The mounting is very easy and carried out quickly. For tamping work the spacer can be disassembled and mounted again in just a few minutes.

... safely and with little effort.

All materials used – both with the solid spacer as well as with the clamp – are corrosion-resistant and produced using quality German engineering.

We reserve the right to make technical changes. Stand 02/2017



Gesellschaft für den Vertrieb
von innovativen Produkten
für den Oberbau,
Vertriebsberatung mbH

Heiliger Weg 8-10
D-44135 Dortmund

Fon 0231 565599-50
Fax 0231 565599-55

www.vtec-gmbh.de
info@vtec-gmbh.com